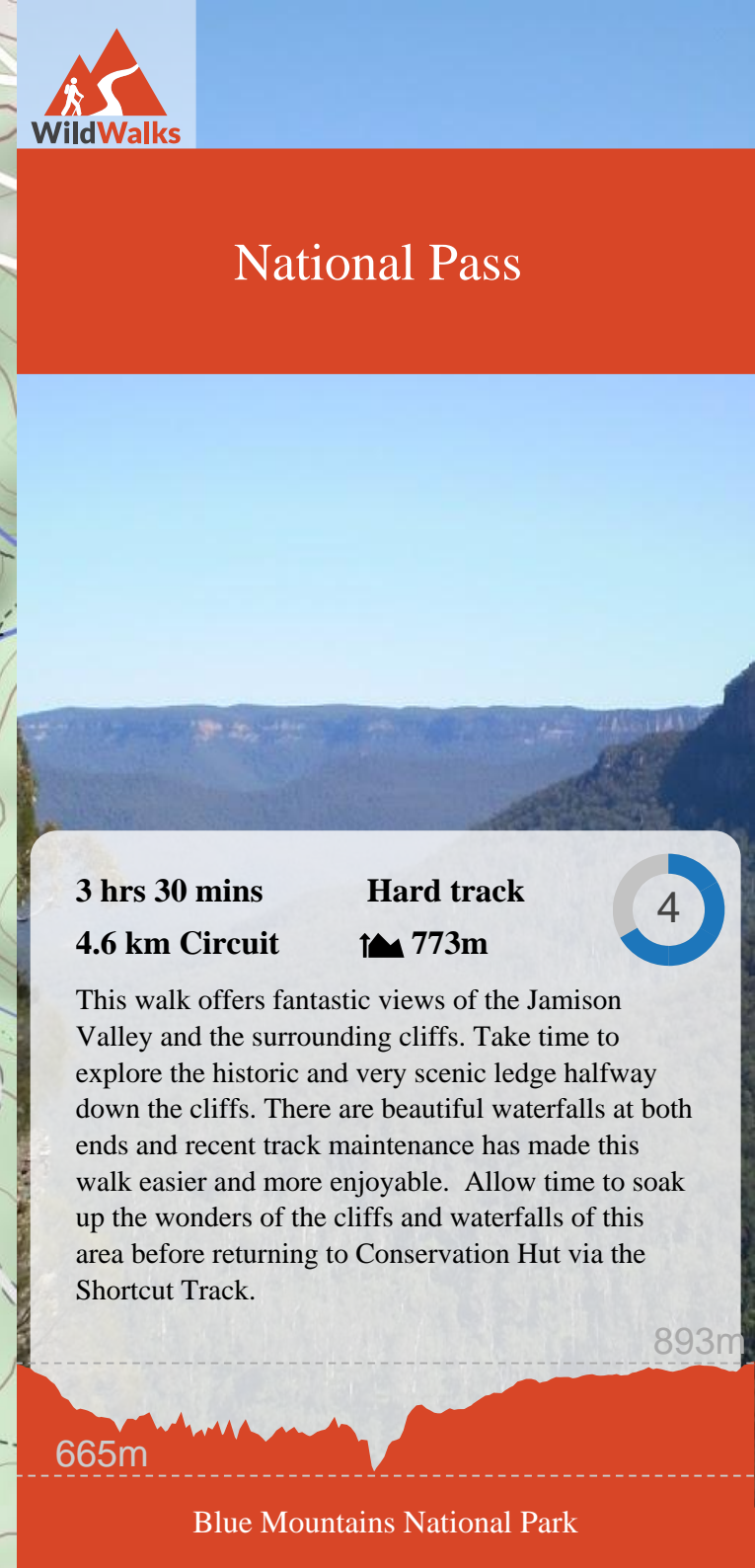
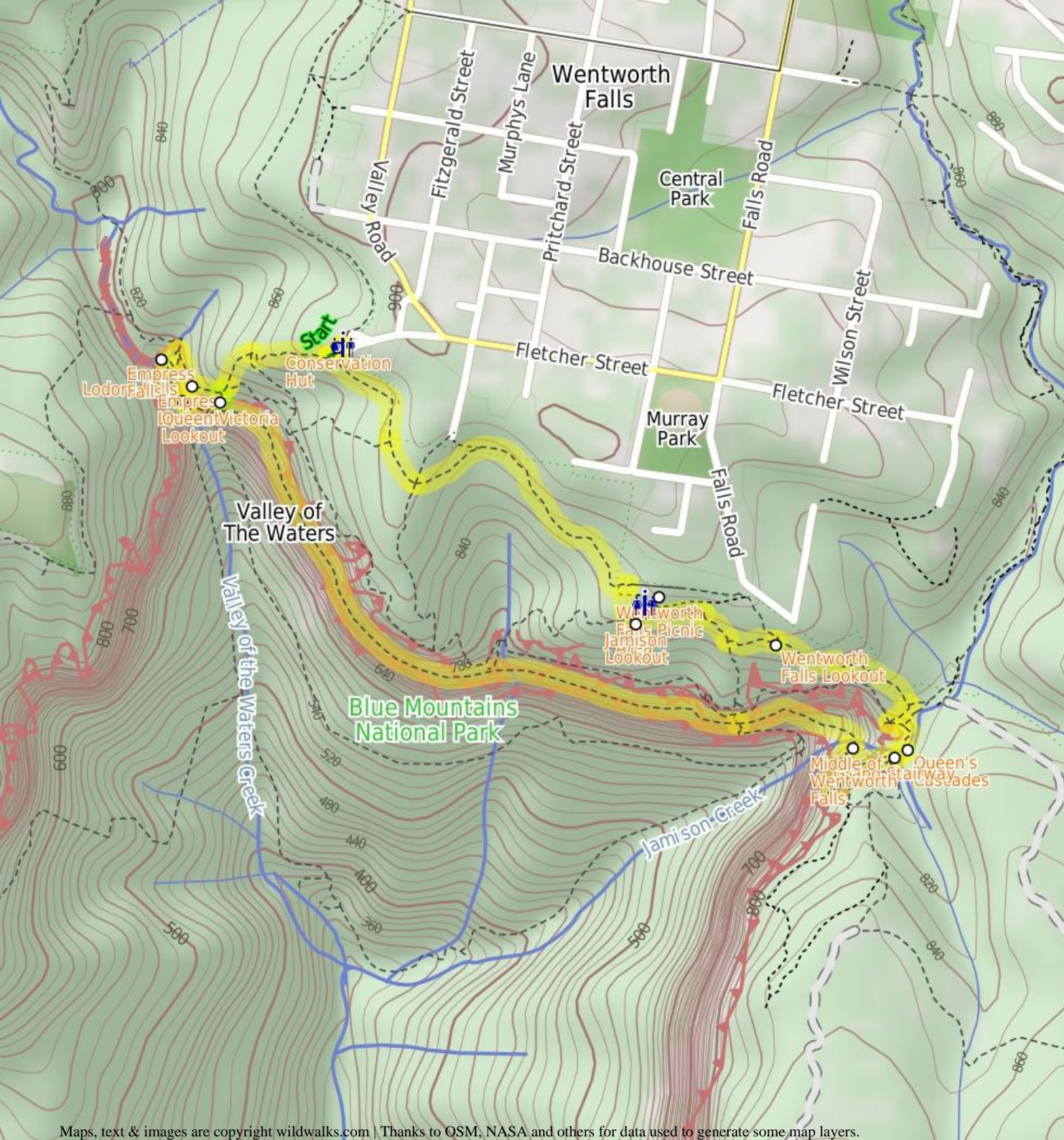


National Pass



3 hrs 30 mins

Hard track

4

4.6 km Circuit

↑ 773m

This walk offers fantastic views of the Jamison Valley and the surrounding cliffs. Take time to explore the historic and very scenic ledge halfway down the cliffs. There are beautiful waterfalls at both ends and recent track maintenance has made this walk easier and more enjoyable. Allow time to soak up the wonders of the cliffs and waterfalls of this area before returning to Conservation Hut via the Shortcut Track.

665m

893m

Blue Mountains National Park

Conservation Hut

Conservation Hut is a small cafe perched above the Valley of the Waters, Blue Mountains National Park. The hut was opened in 1963 as a meeting place for the local conservation movement. Rebuilt, Conservation Hut opened as a cafe in 1993, serving breakfast, lunch and dinner, seven days a week. Around the Conservation Hut is a small parking area, public toilets, picnic shelters, town water and B&B's. For further information or bookings call (02) 4757 3827. [More info.](#)

Queen Victoria Lookout

The Queen Victoria Lookout is perched above the Valley of the Waters, south-west of Conservation Hut. The fenced lookout has views into the narrow section of the valley. The views are made more dramatic by the roar of the waterfalls below and the mists which frequent the area. Empress Falls are only just visible - the main views extend down Jamison Valley. Kings Tableland (left) and Sublime Point(right) dominate the views and the eastern edge of Mount Solitary and beyond is also visible.

Empress Lookout

Empress Lookout is a fenced and signposted lookout, perched on a sandstone overhang above the Valley of the Waters Creek. There is a view down to part of the Empress Falls and into the canyon. The views are filtered through the surrounding trees. It makes for a good spot to catch your breath when walking into, or out of, the Valley of the Waters.

Empress Falls

Empress Falls is a spectacular waterfall in the Valley of the Waters. The Valley of the Water Creek comes out of the slot in the cliff and tumbles down a series of cliffs to a sandy pool. The fall is the site of the last abseil in a popular canyon, making a great site for walkers in the area. Stepping stones help walkers cross below the falls. There is a small overhang next to the falls, giving the area shade and offering a great place to rest.

Lodore Falls

Lodore Falls are a lovely set of falls on the Valley of the Waters Creek. The narrow falls have a staircase on one side and stepping stones (and handrail) crossing the bottom, making it easier for walkers to appreciate this waterfall from many angles. Just beyond the handrail, the water falls over another cliff, providing a great view down the valley.

Before You walk

Bushwalking is fun and a wonderful way to enjoy our natural places. Sometimes things go bad, with a bit of planning you can increase your chance of having an enjoyable and safer walk. Before setting off on your walk check

- 1) Weather Forecast ([BOM Central Tablelands District](#))
- 2) Fire Dangers ([Greater Sydney Region](#))
- 3) Park Alerts ([Blue Mountains National Park](#))
- 4) Research the walk to check your party has the skills, fitness and equipment required
- 5) Agree to stay as a group and not leave anyone to walk solo

Think before you TREK

The 'Think before you TREK' program developed by NSW Police & NPWS promotes the benefits of planning ahead for your bushwalking trip by using an easy to remember acronym:

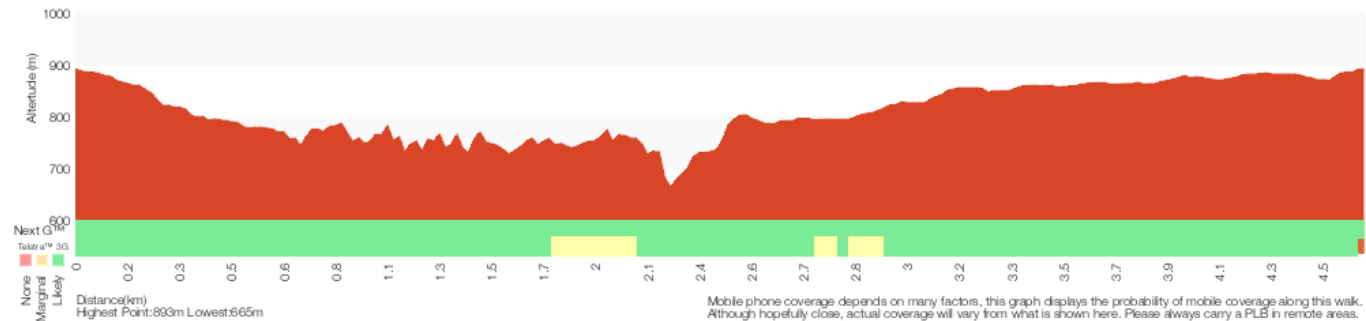
- T** Take adequate supplies of food, water, navigation and first aid equipment.
- R** Register your planned route and tell friends and family when you expect to return.
- E** Emergency beacon (PLB's) should be carried on walks with significant gaps in mobile coverage (check terrain profile).
- K** Keep to your planned route and follow the map and walking trails.

Topo Maps

The maps provided on wildwalks are helpful, but there are times where you may need maps covering a broader area. Maps that cover this walk include;

1:25 000 Map Series:89301S KATOOMBA

1:100 000 Map Series:8930 KATOOMBA



Grade

This walk has been graded using the AS 2156.1-2001. The overall grade of the walk is determined by the highest classification along the whole track.



Grade 4/6
Hard track

Length	4.6 km Circuit
Time	3 hrs 30 mins
Quality of track	Formed track, with some branches and other obstacles (3/6)
Signs	Directional signs along the way (3/6)
Experience Required	Some bushwalking experience recommended (3/6)
Weather	Storms may impact on navigation and safety (3/6)
Infrastructure	Limited facilities, not all cliffs are fenced (3/6)

Are you ready to have fun?

Please ensure you and your group are well prepared and equipped for all possible hazards and delays. Check park closures, weather information and Fire Danger Rating before setting out. Optional side trips and alternate routes noted are not included in this walk's overall grade, length or time estimate. Please allow extra time for resting and exploring areas of interest. The authors, staff and owners of wildwalks take care in preparing this information but will not accept responsibility for any inconvenience, loss or injury you may experience. Please take care, have fun - Happy Walking.

Getting there Traveling by car is the only practical way to get to Conservation Hut (gps: -33.7202, 150.3629). Car: There is free parking available.

This is a circuit, so you will finish back at the start.

Find up to date and more information including; travel directions, weather, park closures and walker feedback at <http://wild.it/tmpt>

0 | Conservation Hut

Conservation Hut is a small cafe perched above the Valley of the Waters, Blue Mountains National Park. The hut was opened in 1963 as a meeting place for the local conservation movement. Rebuilt, Conservation Hut opened as a cafe in 1993, serving breakfast, lunch and dinner, seven days a week. Around the Conservation Hut is a small parking area, public toilets, picnic shelters, town water and B&B's. For further information or bookings call (02) 4757 3827. [More info.](#)

0 | Conservation Hut

(320 m 8 mins) From Conservation Hut, this walk follows the 'Valley of the Waters' sign down some timber and dirt steps passing a couple of picnic shelters. The track soon leads to the signposted intersection with the 'Short Cut Track' (still in view of the Conservation Hut).

Continue straight: From the intersection, this walk follows the 'Valley of the Waters' sign down the steps, passing an information sign. After the handrail and more signs, the track passes a couple of faint tracks (on the left, leading to an old picnic area). Further down the steps, the walk comes to the end of another handrail and a three-way intersection (signposted 'Overcliff Track' and 'National Pass').

Continue straight: From the intersection, this walk follows the 'National Pass - Valley of the Waters' sign down the timber steps. The track passes a few faint tracks (on the left, that lead to an unfenced view point). The walk continues down the steps, soon coming to an unsignposted intersection with the Lyrebird Cliff track (on a small sandstone rock platform).

Continue straight: From the intersection, this walk heads down the wooden steps to almost immediately come to the signposted intersection with 'Queen Victoria Lookout' track.

0.32 | Optional sidetrip to Queen Victoria Lookout

(20 m 1 mins) Turn left: From the intersection, this walk follows the 'Queen Victoria Lookout' sign down the steps towards the handrail. Soon the track passes a small lookout on the left and, shortly afterwards, the fence leads to the rock platform and fenced 'Queen Victoria Lookout'. At the end of this side trip, retrace your steps back to the main walk then Turn left.

0.32 | Queen Victoria Lookout

The Queen Victoria Lookout is perched above the Valley of the Waters, south-west of Conservation Hut. The fenced lookout has views into the narrow section of the valley. The views are made more dramatic by the roar of the waterfalls below and the mists which frequent the area. Empress Falls are only just visible - the main views extend down Jamison Valley. Kings Tableland (left) and Sublime Point (right) dominate the views and the eastern edge of Mount Solitary and beyond is also visible.

0.32 | Int of Valley of the Waters and Queen Victoria Tra

(60 m 2 mins) Veer right: From the intersection, this walk heads down the steps away from 'Queen Victoria Lookout' keeping the rock face to the right. The track soon passes under a sandstone overhang and then down more steps to come to the fenced and signposted 'Empress Lookout'.

0.38 | Empress Lookout

Empress Lookout is a fenced and signposted lookout, perched on a sandstone overhang above the Valley of the Waters Creek. There is a view down to part of the Empress Falls and into the canyon. The views are filtered through the surrounding trees. It makes for a good spot to catch your breath when walking into, or out of, the Valley of the Waters.

0.38 | Empress Lookout

(90 m 4 mins) Turn right: From Empress Lookout, this walk heads down the wooden steps, keeping the handrail and valley to the left. Soon the walk heads down a series of steep metal staircases that zigzag down the hill. At the bottom of the staircases, the walk follows the handrail through a long sandstone overhang. The track then heads down some steps to come to an intersection with the 'Nature Track' and a sign pointing back to 'National Pass - Tea Rooms'.

0.47 | Int of Valley of the Waters and Nature Tracks

(90 m 2 mins) Turn left: From the intersection, this walk follows the 'National Pass - Valley of the Waters' sign down the lower track (with the valley initially to the right). The walk heads down the steps following the handrail and, soon after the sharp right bend, the walk crosses Isabel Creek using the stepping stones. Soon, the walk heads down a timber staircase, through a sandstone overhang and winds down the stone steps. After passing a great view of Empress Falls, the track crosses the Valley of the Waters Creek in front of Empress Falls using the stepping stones. (These creeks may not be passable after rain)

0.56 | Empress Falls

Empress Falls is a spectacular waterfall in the Valley of the Waters. The Valley of the Water Creek comes out of the slot in the cliff and tumbles down a series of cliffs to a sandy pool. The fall is the site of the last abseil in a popular canyon, making a great site for walkers in the area. Stepping stones help walkers cross below the falls. There is a small overhang next to the falls, giving the area shade and offering a great place to rest.

0.56 | Empress Falls Crossing

(70 m 2 mins) Continue straight: From in front of Empress Falls, this walk heads downstream along the track, keeping the creek to the left. After passing the 'Track' sign (pointing back up to the falls), the walk heads down the steps (with handrail). Soon the steps lead to the base of a wide cascade - Sylvia Falls. From Sylvia Falls, this walk heads downstream along the track, keeping the creek and handrail to the left. Soon after heading down a staircase, the walk comes to a creek crossing at the base of Lodore Falls.

0.63 | Lodore Falls

Lodore Falls are a lovely set of falls on the Valley of the Waters Creek. The narrow falls have a staircase on one side and stepping stones (and handrail) crossing the bottom, making it easier for walkers to appreciate this waterfall from many angles. Just beyond the handrail, the water falls over another cliff, providing a great view down the valley.

0.63 | Lodore Falls

(20 m 1 mins) Continue straight: From Lodore Falls, this walk crosses the Valley of the Waters Creek, keeping the handrail and main valley to the right (This creek may be impassable after rain). The walk then heads down the

stairs under a small overhang to soon come to an intersection with Wentworth Pass and a 'National Pass - Conservation Hut' sign pointing back up.

0.66 | Int of Valley of the Waters and National Pass Trac

(1.5 km 1 hr 23 mins) Veer left: From the intersection, this walk follows the 'National Pass - Wentworth Falls' sign up the steps, keeping the valley on the right. After a series of steps (that soon bend around), the walk climbs a staircase up the side of the cliff. At the top, the walk follows the ledge through the small overhangs to then wind along a stepping-stone path along the side of the valley. Passing a sandstone bench-seat, the walk passes a couple more handrailed sections and small creeks. The walk then opens up on a large clear ledge, with great views of Mount Solitary to the right. After passing another similar open ledge, the walk leads further along the cliff. Before long, the walk comes to another handrailed section, with a timber platform that heads behind a waterfall from Den Fenella Creek. From the Den Fenella Creek waterfall, this walk heads along the path, keeping the valley views to the right. Soon the track heads along a fairly open ledge and comes to a vantage point with great views into the valley. From here, the walk continues along the base of the cliff, mostly along stepping stones. After passing a few more small creeks, the walk comes to a 'Y' intersection at the top of the 'Slack Stairs', with a sign pointing back to 'Valley of the Waters'.

2.11 | Top of the Slack Stairs

(270 m 19 mins) Continue straight: From the intersection, this walk follows 'National Pass - Wentworth Falls' sign along the upper track. The track soon bends left and picks up a handrail on the right. The track makes its way along the base of the cliff, with great views to Wentworth Falls. Soon the track passes under a low sandstone overhang (be sure to duck), then continues around the side of the valley and, before long, starts to head steeply down a series of stairs. At the bottom of these stairs, the the walk follows the handrail across the rock-platform to come to the pool and creek crossing (halfway up Wentworth Falls).

2.37 | Middle of Wentworth Falls

The National Pass crosses Wentworth Falls halfway down its long drop. At this crossing, NPWS have installed sandstone block bridges to improve access for walkers. There are a few side tracks that have been used to explore the area - beware of the slippery rocks and unfenced ledges. There is also a great view into the valley from where the water continues to fall on its long journey further into the valley. This is a lovely spot to cool down on a warm day.

2.37 | Middle Wentworth Falls

(330 m 16 mins) Continue straight: From the pool (halfway up Wentworth Falls), this walk crosses the creek using the small stone-slab bridges. The track then heads up the rock steps next to the creek, to then turn right and head away from the creek and into the denser forest. The walk follows the stone steps and stepping stones up the hill to soon come to a long flight of stairs, cut into the rock (with a handrail). Here the walk heads up the steep National Pass - about halfway up the steep climb, the walk passes a 'No Access Cliff Point' sign and fenced-off area. After the sign, the walk continues to the top of the stairs, where the track flattens out and passes a small, square hole in the rock and wonderful views across the valley and of Wentworth Falls. The walk then heads up the wooden staircase and through several more sandstone overhangs as it continues to climb up the series of steps. After the walk leaves the main cliff, it comes to an intersection (with a faint track to the right) and a 'Rocket Point Circuit' sign, just before a small creek crossing.

2.7 | Grand Stairway

The Grand Stairway is a very memorable section of the National Pass in the Blue Mountains National Park. The stairway is reported to be 'the tallest

outdoor staircase in Australia' and was built in the early 1900's by hand (and dynamite). This stairway, and the rest of the National Pass, was built by a team nicknamed 'the Irish Brigade' for the cost of £430 . Today, the Grand Stairway is well-maintained and provides walkers access to the valley below Wentworth Falls.

2.7 | Rocket Point Creek Intersection

(30 m 1 mins) Continue straight: From the intersection, this walk keeps the handrail on the left and cross a small creek using the stepping stones. The track soon leads to a large pool, Queen's Cascades and a fenced creek crossing, the top of Wentworth Falls.

2.73 | Queen's Cascades

Queen's Cascades are a lovely set of falls on the Jamison Creek at the top of Wentworth Falls. The creek heads down the wide, two-stage cascades into a sandy pool. From the pool, the water flows between the stepping stones, under the fence and down the very tall Wentworth Falls. There are also great views to Sublime Point across the valley.

2.73 | Top of Wentworth Falls

(480 m 12 mins) Continue straight: From top of Wentworth Falls, this walk crosses the creek on the stepping stones keeping the view to the left (the creek may be impassable after rain). The walk heads up the log steps (passing some more nice views of Jamison Creek) to soon come to a three-way intersection, with a sign pointing back to 'Wentworth Falls' and 'Wentworth Pass'.

Continue straight: From the intersection, this walk follows the 'Undercliff Track' sign, keeping the main valley to the left. The walk soon heads up a gentle set of steps and comes to a four-way intersection with 'Fletchers Lookout' (not far to the left).

Turn right: From the intersection, this walk follows the 'Wentworth Falls Picnic area' sign up the steps, away from 'Fletchers Lookout'. Soon the track comes to a 'T' intersection, with a sign pointing back to 'Wentworth Falls'.

Veer left: From the intersection, this walk follows the 'Wentworth Falls Picnic Area' sign up the log steps. The track soon passes some views to the left and then comes to an intersection (at a sharp right-hand bend), with a track closed at the time of writing. Here there is a sign pointing back to 'Wentworth Falls - National Pass'.

Turn right: From the intersection, this walk heads up the steps, following 'Wentworth Falls Picnic Area' signs. The walk soon heads through a sharp left bend, then continues up the hill, passing several information signs. At the top of the steps, the track breaks out to Wentworth Falls Lookout on Sir H. Burrell Drive.

3.21 | Wentworth Falls Lookout

Wentworth Falls Lookout, in the Blue Mountains National Park, is beside Sir H Burrell Drive. The lookout is fenced and has a large information sign about the area. There are some bench seats and great vistas. There is a view to Wentworth Falls (in the valley to the left), but the most captivating view is across the Jamison Valley to Mount Solitary. There are also great views of the Kings Tableland (left), Sublime Point (right) and Narrow Neck (far right) escarpments. This is a great place to enjoy the scope of this World Heritage listed area.

3.21 | Wentworth Falls Lookout

(180 m 5 mins) Veer left: From Wentworth Falls Lookout (next to Sir H. Burrell Drive), this walk follows the 'Princes Rock Lookout' sign down the log stairs. Soon the track passes an old water trough on the right (not suitable for drinking). Soon after this, the track comes to a 'T' intersection, with a post pointing back up to 'Wentworth Falls Lookout'.

Turn right: From the intersection, this walk heads up the steps, following the

'Car Park' arrow. The track soon passes a sign pointing back to 'Princes Rock Lookout' and comes to the footpath on the side of Sir H. Burrell Drive.

3.39 | Int of Sir H. Burrell Drive and Princes Rock Track

(140 m 2 mins) Turn left: From the top of the steps, this walk follows the footpath against the flow of traffic, keeping Jamison Valley to the left. Soon the footpath leads past the information sign to the fenced and signposted Jamison Lookout (and great views).

3.52 | Jamison Lookout

The recently renovated Jamison Lookout is on Sir H Burrell Drive, in the Blue Mountains National Park. The lookout has a wonderful view to the south, down the Jamison Valley to Mount Solitary and beyond. This is a great wheelchair-accessible viewpoint with a large information sign and bench seats. The lookout is fenced, and is located just below the Wentworth Falls Picnic Area.

3.52 | Jamison Lookout

(90 m 2 mins) Continue straight: From Jamison Lookout, this walk heads through the large car park to the far side of the lower parking area, coming to the signposted 'Short Cut Track' trackhead.

3.61 | Wentworth Falls Picnic Area

The Wentworth Falls Picnic Area is in the Blue Mountains National Park on Sir H Burrell Drive (Wentworth Falls). The picnic area is host to a couple of wonderful lookouts and some good facilities. A large car park, toilets (wheelchair accessible), picnic tables, free electric BBQs, town water and information signs. This is a great spot to relax between walks in the area.

3.61 | Sir H. Burrell Drive Carpark (Nth)

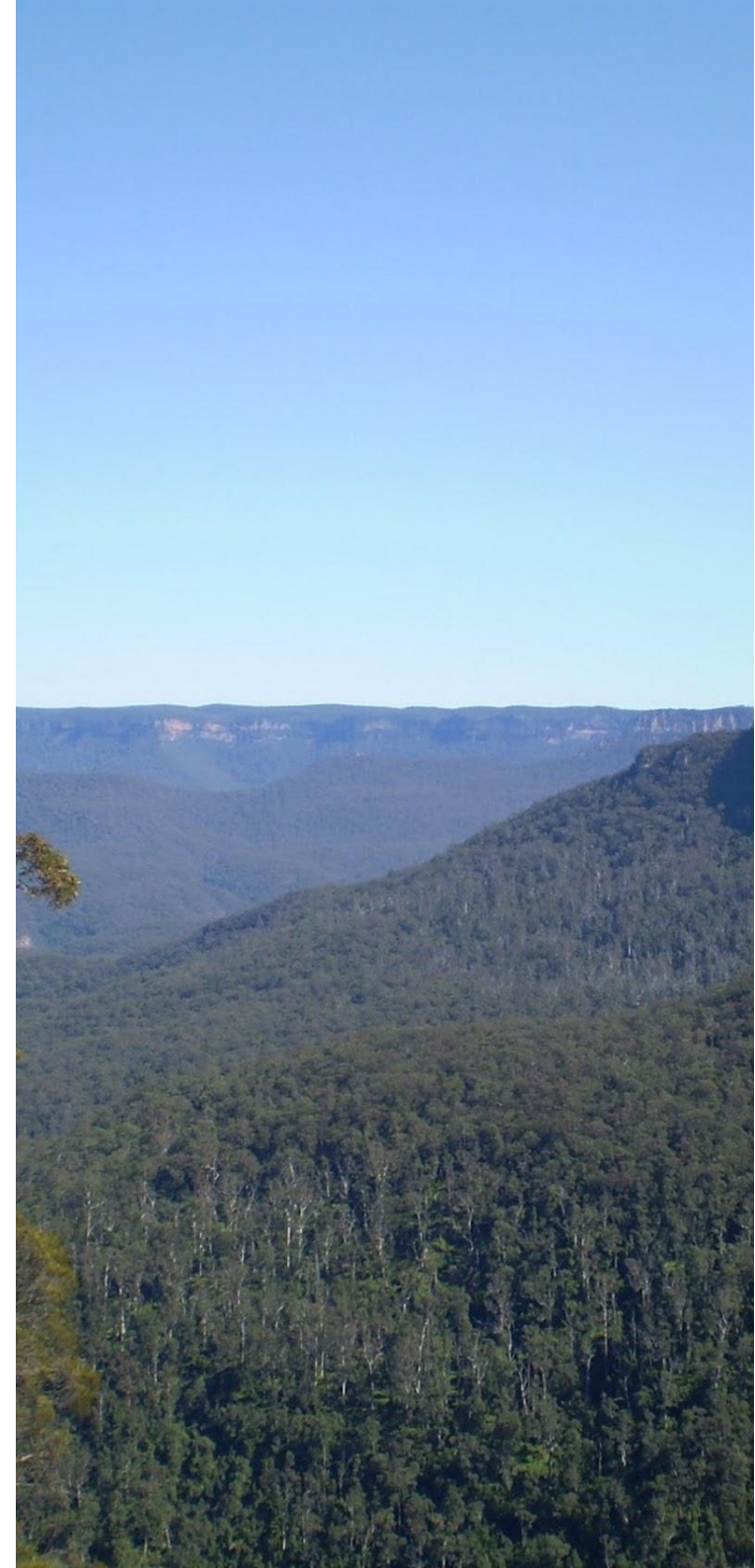
(620 m 13 mins) Turn left: From the 'Short Cut Track' sign in the Sir H. Burrell Drive car park, this walk follows the sign to 'Conservation Hut'. The wide track soon turns left and winds through the bush, tending to the left - there are a number of anti-erosion systems in place to step over. In time, the track comes to a four-way intersection, signposted as the ways to 'Conservation Hut', 'Breakfast Pt LO' or up 'to Murphys Lane.

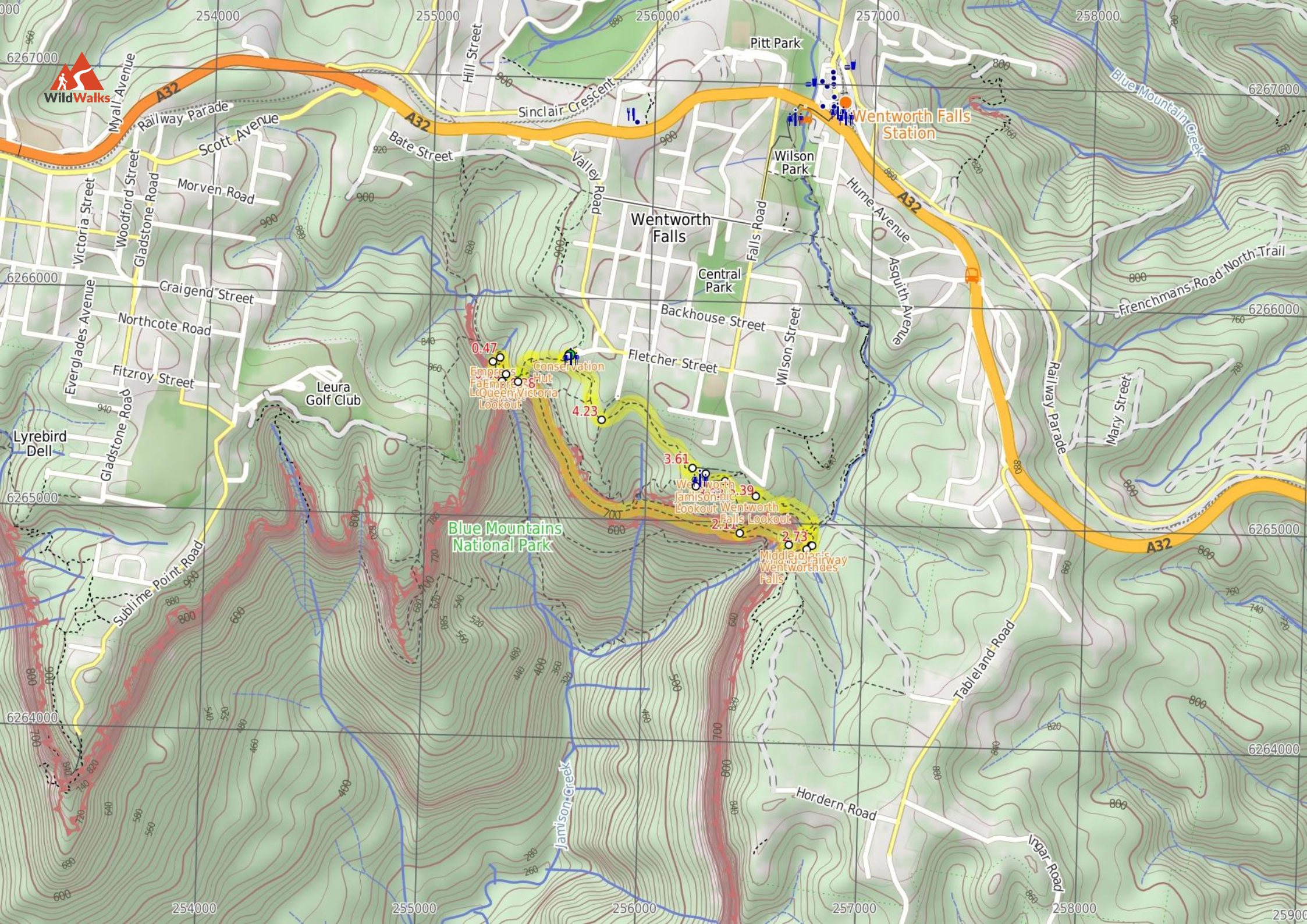
4.23 | Int of Shortcut and Breakfast Point Lookout Tracks

(390 m 9 mins) Continue straight: From the intersection, the walk heads north-west along the flat bush track following the signs to Conservation Hut. Soon the track comes to an intersection with another track (on the left).

Continue straight: From the intersection, the walk heads north along the 'Shortcut' track, heading away from Wentworth Falls picnic area. Soon the track turns left and crosses a small creek using a bridge. From the creek, the track gradually heads up the hill via log steps. Soon the walk comes to a 'T' intersection where there are several signs, including one pointing up towards 'Conservation Hut' and another down to the 'Valley of the Waters'.

Turn right: From the intersection, this walk heads up the steps towards the building. The walk passes a couple of picnic shelters (on the right) before coming to the road and the front of the 'Conservation Hut'.





WildWalks

Blue Mountains National Park

Wentworth Falls Station

Wentworth Falls

Leura Golf Club

Wentworth Falls Lookout

Middle of Airway Falls

Lyrebird Dell

6264000

254000

255000

256000

257000

258000

259000

6264000

6265000

6266000

6267000

Summary navigation sheet for the National Pass



km	From	Up/Dwn	Length	Initial directions (Use full tracknotes and maps for more detail)
Start	Conservation Hut -33.7202,150.3629 (GR Katoomba, 556657)	2 -75	320 m 8 mins	From Conservation Hut, this walk follows the 'Valley of the Waters' sign down some timber and dirt steps passing a couple of picnic shelters.
0.32	Int of Valley of the Waters and Queen Victoria Tracks -33.7211,150.3604 (GR Katoomba, 554656)	0 -17	20 m 1 mins	Optional sidetrip to Queen Victoria Lookout. Turn left: From the intersection, this walk follows the 'Queen Victoria Lookout' sign down the steps towards the handrail.
0.32	Int of Valley of the Waters and Queen Victoria Tracks -33.7211,150.3604 (GR Katoomba, 554656)	0 -18	60 m 2 mins	Veer right: From the intersection, this walk heads down the steps away from 'Queen Victoria Lookout' keeping the rock face to the right.
0.38	Empress Lookout -33.721,150.3598 (GR Katoomba, 554656)	12 -20	90 m 4 mins	Turn right: From Empress Lookout, this walk heads down the wooden steps, keeping the handrail and valley to the left.
0.47	Int of Valley of the Waters and Nature Tracks -33.7203,150.3595 (GR Katoomba, 553657)	4 -14	90 m 2 mins	Turn left: From the intersection, this walk follows the 'National Pass - Valley of the Waters' sign down the lower track (with the valley initially to the right).
0.56	Empress Falls Crossing -33.7206,150.3592 (GR Katoomba, 553657)	0 -9	70 m 2 mins	Continue straight: From in front of Empress Falls, this walk heads downstream along the track, keeping the creek to the left.
0.63	Lodore Falls -33.7212,150.3595 (GR Katoomba, 553656)	0 -14	20 m 1 mins	Continue straight: From Lodore Falls, this walk crosses the Valley Of the Waters Creek, keeping the handrail and main valley to the right (This creek may be impassable after rain).
0.66	Int of Valley of the Waters and National Pass Tracks -33.7214,150.3597 (GR Katoomba, 553656)	411 -410	1.5 km 1 hr 23 mins	Veer left: From the intersection, this walk follows the 'National Pass - Wentworth Falls' sign up the steps, keeping the valley on the right.
2.11	Top of the Slack Stairs -33.7275,150.3712 (GR Katoomba, 564650)	88 -117	270 m 19 mins	Continue straight: From the intersection, this walk follows 'National Pass - Wentworth Falls' sign along the upper track.
2.37	Middle Wentworth Falls -33.728,150.3736 (GR Katoomba, 567649)	98 -36	330 m 16 mins	Continue straight: From the pool (halfway up Wentworth Falls), this walk cross the creek using the small stone-slab bridges.
2.70	Rocket Point Creek Intersection -33.7282,150.3745 (GR Katoomba, 567649)	6 -2	30 m 1 mins	Continue straight: From the intersection, this walk keeps the handrail on the left and cross a small creek using the stepping stones.
2.73	Top of Wentworth Falls -33.728,150.3747 (GR Katoomba, 568649)	66 -7	480 m 12 mins	Continue straight: From top of Wentworth Falls, this walk crosses the creek on the stepping stones keeping the view to the left (the creek may be impassable after rain).
3.21	Wentworth Falls Lookout -33.7259,150.372 (GR Katoomba, 565651)	17 -13	180 m 5 mins	Veer left: From Wentworth Falls Lookout (next to Sir H.
3.39	Int of Sir H. Burrell Drive and Princes Rock Track -33.7254,150.3705 (GR Katoomba, 564652)	1 -3	140 m 2 mins	Turn left: From the top of the steps, this walk follows the footpath against the flow of traffic, keeping Jamison Valley to the left.
3.52	Jamison Lookout -33.7255,150.369 (GR Katoomba, 562652)	6 0	90 m 2 mins	Continue straight: From Jamison Lookout, this walk heads through the large car park to the far side of the lower parking area, coming to the signposted 'Short Cut Track' trackhead.
3.61	Sir H. Burrell Drive Carpark (Nth) -33.7249,150.3689 (GR Katoomba, 562652)	38 -22	620 m 13 mins	Turn left: From the 'Short Cut Track' sign in the Sir H.
4.23	Int of Shortcut and Breakfast Point Lookout Tracks -33.7229,150.3644 (GR Katoomba, 558654)	24 -13	390 m 9 mins	Continue straight: From the intersection, the walk heads north-west along the flat bush track following the signs to Conservation Hut.